



The Race View Menu

£15.95 per person + £6 Admission

STARTER

CHEFS FRESHLY PREPARED SOUP OF THE DAY

Served with Crusty Bread

MAIN COURSES.

SLOW COOKED DAUBE OF BEEF

Served with Cream Potatoes and a Red Wine and Thyme Sauce.
Carrots and Green Beans

CHICKEN BREAST STUFFED WITH HAGGIS

Served with a Cream Whiskey sauce, Fondant Potatoes
Carrots and Green Beans

GOAT'S CHEESE, PEPPER AND WALNUT WELLINGTON

Served with a Salad and Pesto garnish

DESSERTS

DUO OF STRAWBERRY & VANILLA ICE CREAM

Served with Chocolate and Raspberry Sauce

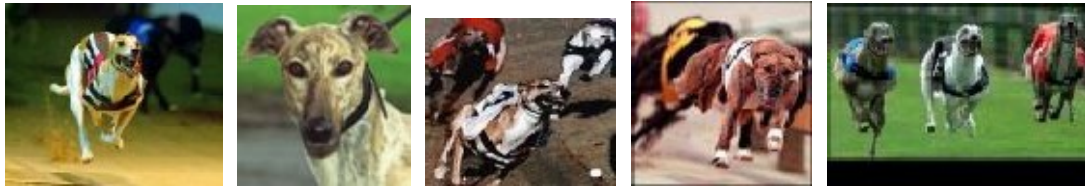
POTS OF CHOCOLATE

Served with Shortbread

TEA/COFFEE AVAILABLE ON REQUEST £1.80

SOME FOODS MAY CONTAIN NUTS

SOME FOODS MAY CONTAIN TRACES OF ALCOHOL



Racing Information

Race Nights are held on Thursday, Friday & Saturday Nights.

Tuesday (8 races)

1st Race 8pm—Last Race 9.36pm

Friday (11 races)

1st Race 8pm—Last Race 10.10pm

Saturday (12 races)

1st Race 7.50pm—Last Race 10.18pm

We recommend that customers dining in our restaurant are seated by 7.15pm. This will allow you more time to feel the fun of the races.

We have four bars within the stadium. These are open from 7pm and will normally close 1/2 an hour after the last race. Bar opening and closing times can vary. Where there are special events or private bookings, opening times may be extended.

The following bets are available at all tote windows throughout the stadium

win pick the winner of the race
(minimum stake £1)

forecast pick the 1st & 2nd in the correct order
(minimum stake 50p)
reversed

Reverse forecast pick the 1st & 2nd in any order
(minimum stake 2 bets @ 50p = £1)

trio pick the 1st, 2nd & 3rd in correct order
(minimum stake 25p)

trio always pick the 1st, 2nd & 3rd in any order
(minimum stake 6 bets @ 25p = £1.50)

intertrack

You can place any of the above bets at tonight's 'away' greyhound meeting at windows marked with the intertrack sign

Remember a tote bet can be placed on any later race at anytime during the evening.