



# The Race View Menu

£15.95 2 for 1 Offer (Only available with printed voucher)  
+ £6 Admission per person

## STARTER

**CHEFS FRESHLY PREPARED SOUP OF THE DAY**

Served with Crusty Bread

\*\*\*\*\*

## MAIN COURSES

**Breaded Haddock**

Served with Chips and Peas

**Chef Homemade Chicken Curry**

Served with Rice

\*\*\*\*\*

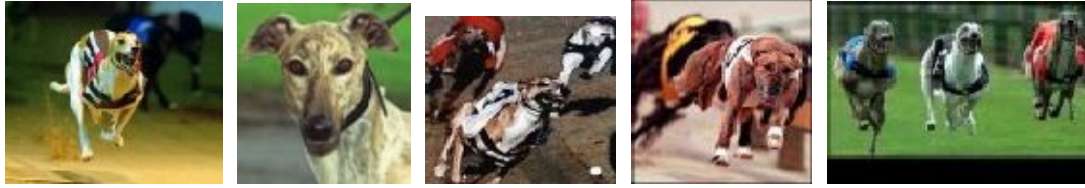
**ICE CREAM AVAILABLE ON REQUEST £1.95**

\*\*\*\*\*

**TEA/COFFEE AVAILABLE ON REQUEST £1.80**

*SOME FOODS MAY CONTAIN NUTS*

*SOME FOODS MAY CONTAIN TRACES OF ALCOHOL*



# Racing Information

Race Nights are held on Friday & Saturday Nights.

Friday (11 races)

1st Race 8pm—Last Race 10.10pm

Saturday (12 races)

1st Race 7.50pm—Last Race 10.18pm

We recommend that customers dining in our restaurant are seated by 7.15pm. This will allow you more time to feel the fun of the races.

We have four bars within the stadium. These are open from 7pm and will normally close 1/2 an hour after the last race. Bar opening and closing times can vary. Where there are special events or private bookings, opening times may be extended.

The following bets are available at all tote windows throughout the stadium

**Win** pick the winner of the race  
(minimum stake £1)

**Forecast** pick the 1st & 2nd in the correct order  
(minimum stake 50p)

**Reverse Forecast** pick the 1st & 2nd in any order  
(minimum stake 2 bets @ 50p = £1)

**Trio** pick the 1st, 2nd & 3rd in correct order  
(minimum stake 25p)

**Trio Always** pick the 1st, 2nd & 3rd in any order  
(minimum stake 6 bets @ 25p = £1.50)

## Intertrack

You can place any of the above bets at tonight's 'away' greyhound meeting at any tote window throughout the stadium

Remember a tote bet can be placed on any later race at anytime during the evening.